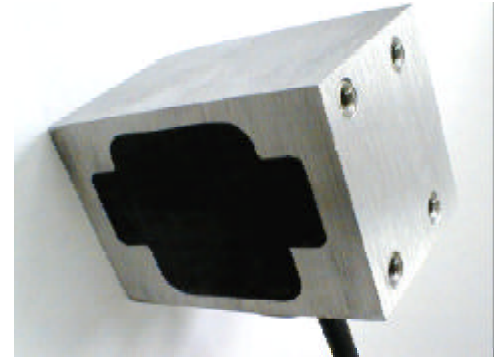


**Model P1000B**  
 & Type "B" probe

**Dual Double Metal Probe**

**Signal Penetrates Thick Steel - Tough Cast Aluminum Housing - 75 mm (3") Sensing Range**

Prime's most powerful probe, the **Model P1000B** monitors steel thickness from .1 mm to 7.5 mm (.004" to .300"). The P1000B is a cast aluminum housing with internal electronics encapsulated in epoxy. On light gauge metal, the transmitter and receiver separate to a maximum of 75mm (3"). Calibration is quick and easy when used with one of Prime's new metal detectors (DS150, DS1500, DS1510 & DS1520) and the push-button teach feature.

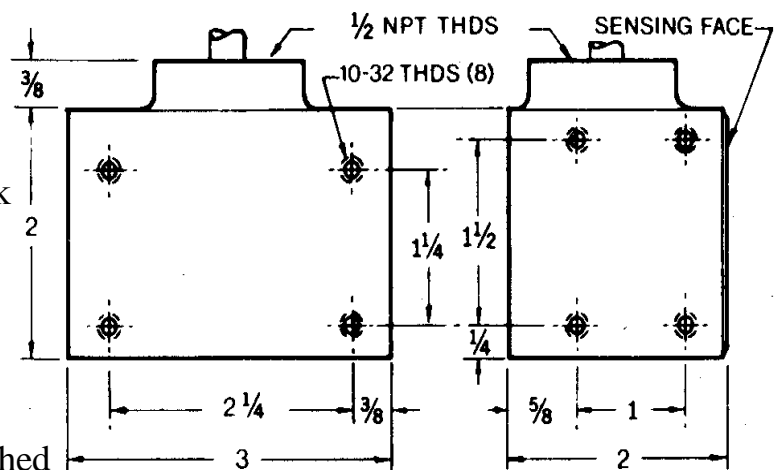


Eight #10-32 threaded holes provide an easy way to mount the probe. The Model P1000B Probe features IP67 (NEMA 6P) seal rating and is standard with 3 m (10') of a twist pair, shielded, vinyl cable. The specified cable is designed to provide high noise immunity. Maximum distance from sensor to control approaches 100 feet.

The **Type "B"** probe is an earlier version of the P1000B. The Type "B" is for use on amplifiers (Models DS11, DS12, DS13 & DS20) that needed three conductors for oscillation of the signal. The maximum distance of the Type "B" from probe to amplifier is within 30 feet. Both probes provide a high degree of rugged duty to last many years of service.

**Probe Features**

- Detects single steel up to 7.5mm thick
- Wide 75mm transmitter to receiver separation
- Detects steel, aluminum, magnesium
- Cast aluminum housing
- Epoxy encapsulation
- Cable length 3mm, permanently attached
- Sealing rated, IP67 NEMA 6P
- Compatible with DS150, and DS1500
- Used as transmitter or receiver



**Housing Dimensions,  
 Conduit fitting 1/2 NPT threads,  
 Mounting with (8) 10-32 threaded holes**