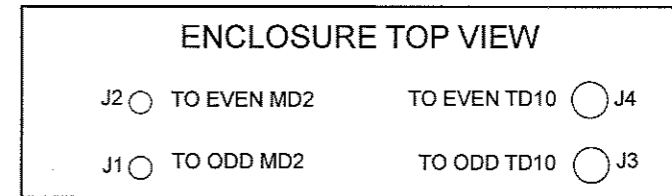
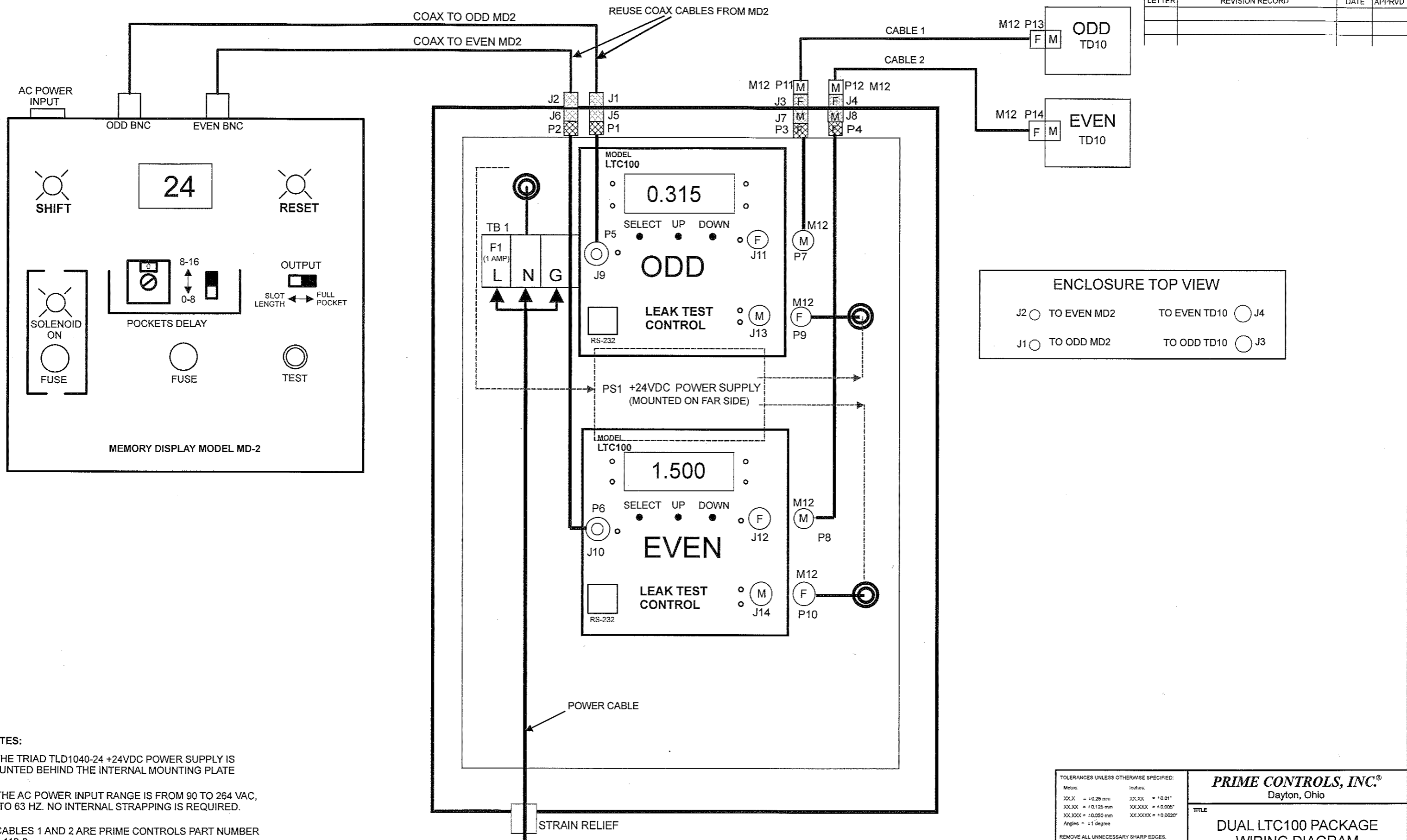


LETTER	REVISION RECORD	DATE	APPRVD



- NOTES:**
1. THE TRIAD TLD1040-24 +24VDC POWER SUPPLY IS MOUNTED BEHIND THE INTERNAL MOUNTING PLATE
 2. THE AC POWER INPUT RANGE IS FROM 90 TO 264 VAC, 47 TO 63 HZ. NO INTERNAL STRAPPING IS REQUIRED.
 3. CABLES 1 AND 2 ARE PRIME CONTROLS PART NUMBER CBL112-2

90-264VAC INPUT.
 CONNECT THE LINE TO "L" ON TB1
 CONNECT THE NEUTRAL TO "N" ON TB1
 CONNECT THE GROUND TO "G" ON TB1

TOLERANCES UNLESS OTHERWISE SPECIFIED:

Metric:	Inches:
XXX = ±0.25 mm	XX.XX = ±0.01"
XX.XX = ±0.125 mm	XX.XXX = ±0.005"
XX.XXX = ±0.050 mm	XX.XXXX = ±0.0020"
Angles = ±1 degree	

REMOVE ALL UNNECESSARY SHARP EDGES.
 SURFACES TO BE CLEAN AND FREE OF DEFECTS.

DRAWN KANITH L. STONE	DATE 04-01-09
CHECKED	
APPROVED	

PRIME CONTROLS, INC.[®]
 Dayton, Ohio

TITLE
 DUAL LTC100 PACKAGE
 WIRING DIAGRAM

SIZE	SHEET 1 of 1	REV.	DWG. NO.
B	SCALE NONE		201018